

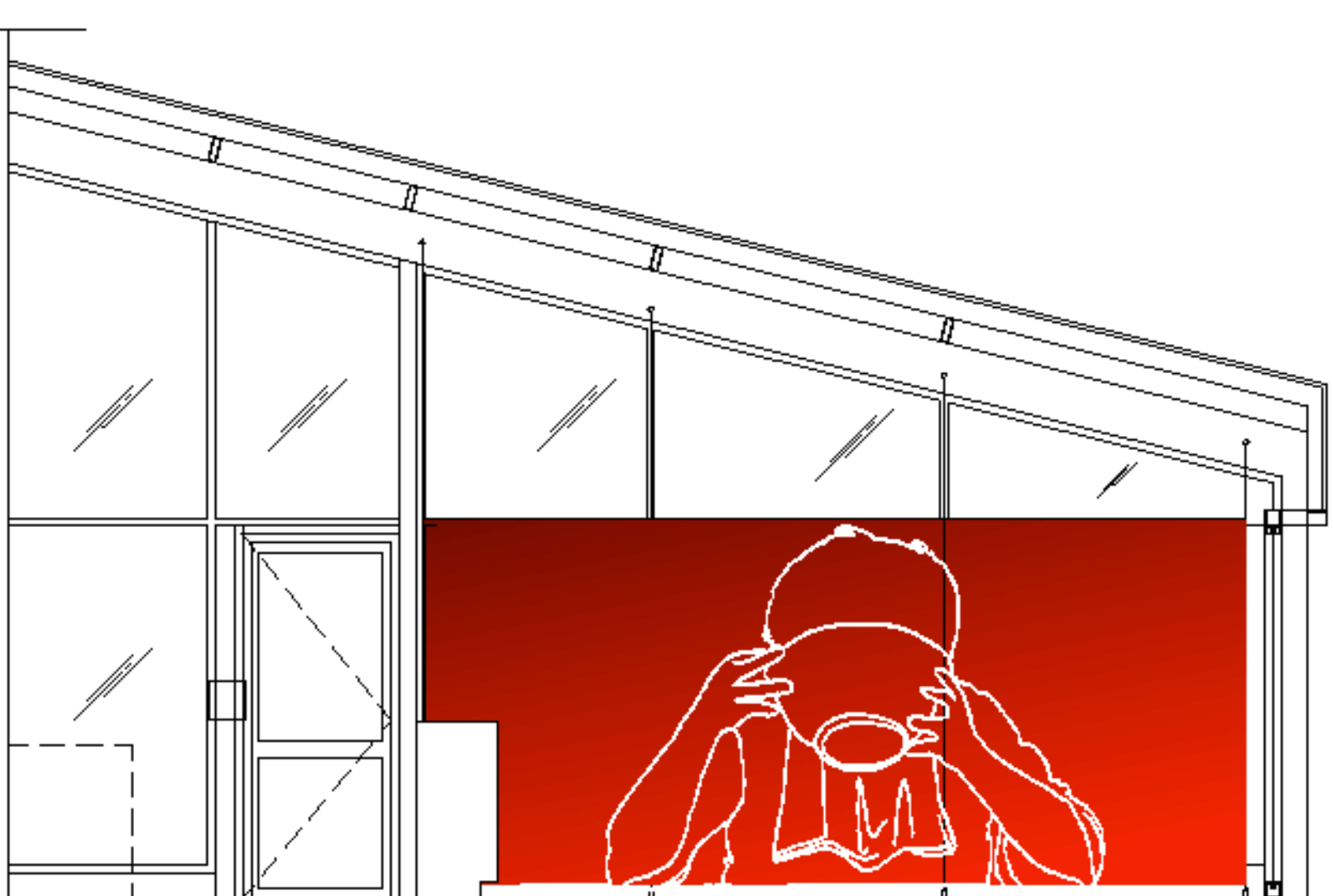


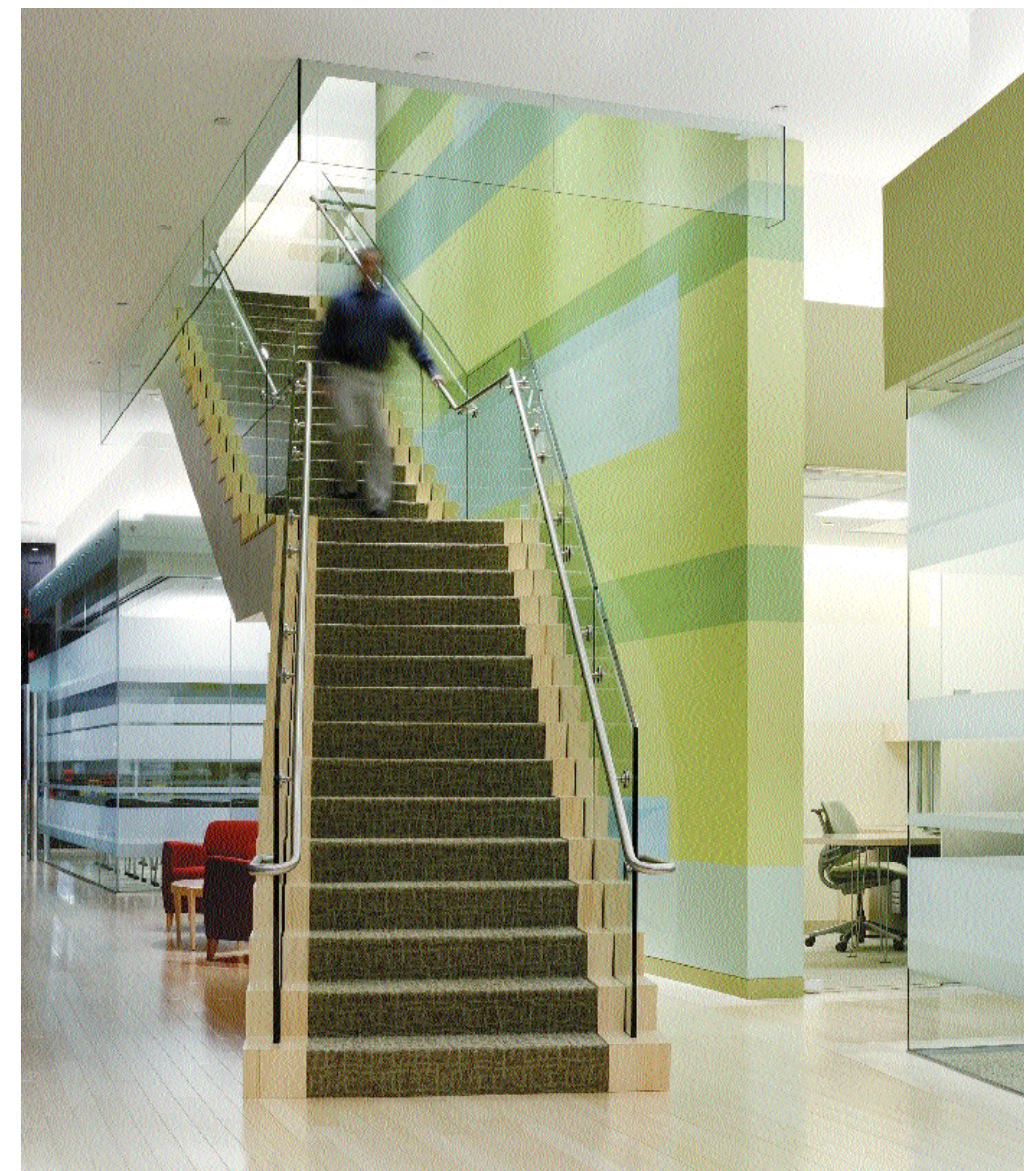
WAGAMAMA, UK RESTAURANT CHAIN

International Japanese noodle franchise Wagamama makes its U.S. debut, and it's an instant Faneuil Hall phenom that's already attracting hordes of tourists and area workers; streamlined yet sprawling indoors and out, it's ladling up inexpensive ramen, curries, stir-fries and more to be washed down with beer, wine and fresh juices.

All eyes were on Gensler to assure we correctly interpreted this UK chain for US audiences. Environmental graphic design components include: cherry blossom-inspired light wall for lower level private eating area, construction surround, graphic printed shades and more.

So far so good! Gensler is designing a new Harvard Square location planned to open this summer 2007.





FIDELITY INVESTOR CENTERS

When the largest U.S. mutual-fund company needed to refresh its retail branches, it turned to Gensler to spearhead an effort involving interior architecture and signature finishes as well as display fixtures, graphics, and technology.

The concept, which has since been rolled out to over 80 Fidelity outposts nationwide, made its debut at a 14,000-square-foot flagship in Boston's Financial District. Each element maximizes customer choice and access to information. Transparency and movement further underscore that idea. Running circulation routes along the glazed facade, for example, gives passersby a clear view of a full-color LED stock ticker and billboard-style supergraphics.

Vinyl supergraphics, adhered to the glass wall of the second-floor offices take on a billboard effect when seen from the street. Part of the lobby is covered with a signature graphic pattern combined and layered with an updated version of its longtime starburst logo as seen applied to the exterior windows.